

MALDIVES LAND SURVEY AUTHORITY

MINISTRY OF HOUSING AND INFRASTRUCTURE

Office (PABX): +(960) 3004300, Fax: +(960) 3004254

Ameenee Magu, Maafannu, Male', 20392, Maldives.

Email: survey@housing.gov.mv

Web: www.surveyofmaldives.gov.mv,



CONTROLPOINT DETAILS	Station Number	PSM 5744
Coordinate Information		
Geodetic	Grid	
WGS 84	UTM Zone 43	
Lat: 5°15'41.13145"N	E:	295513.766
Long: 73°09'17.73373"E	N:	581863.981
Ellp Height: -92.853	Orth Height:	+1.001
Island Name: B.THILADHOO	Date:	10 OCTOBER 2019

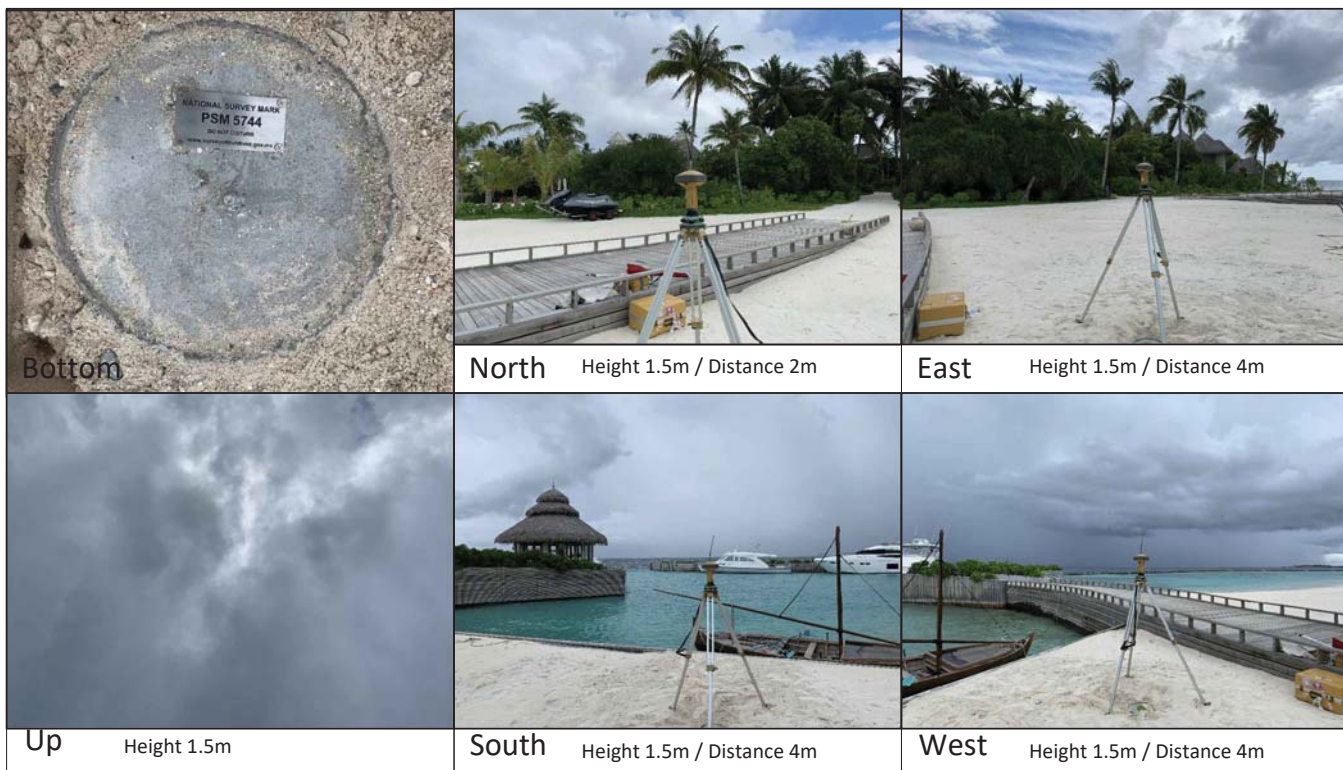
Monument description & method of survey:

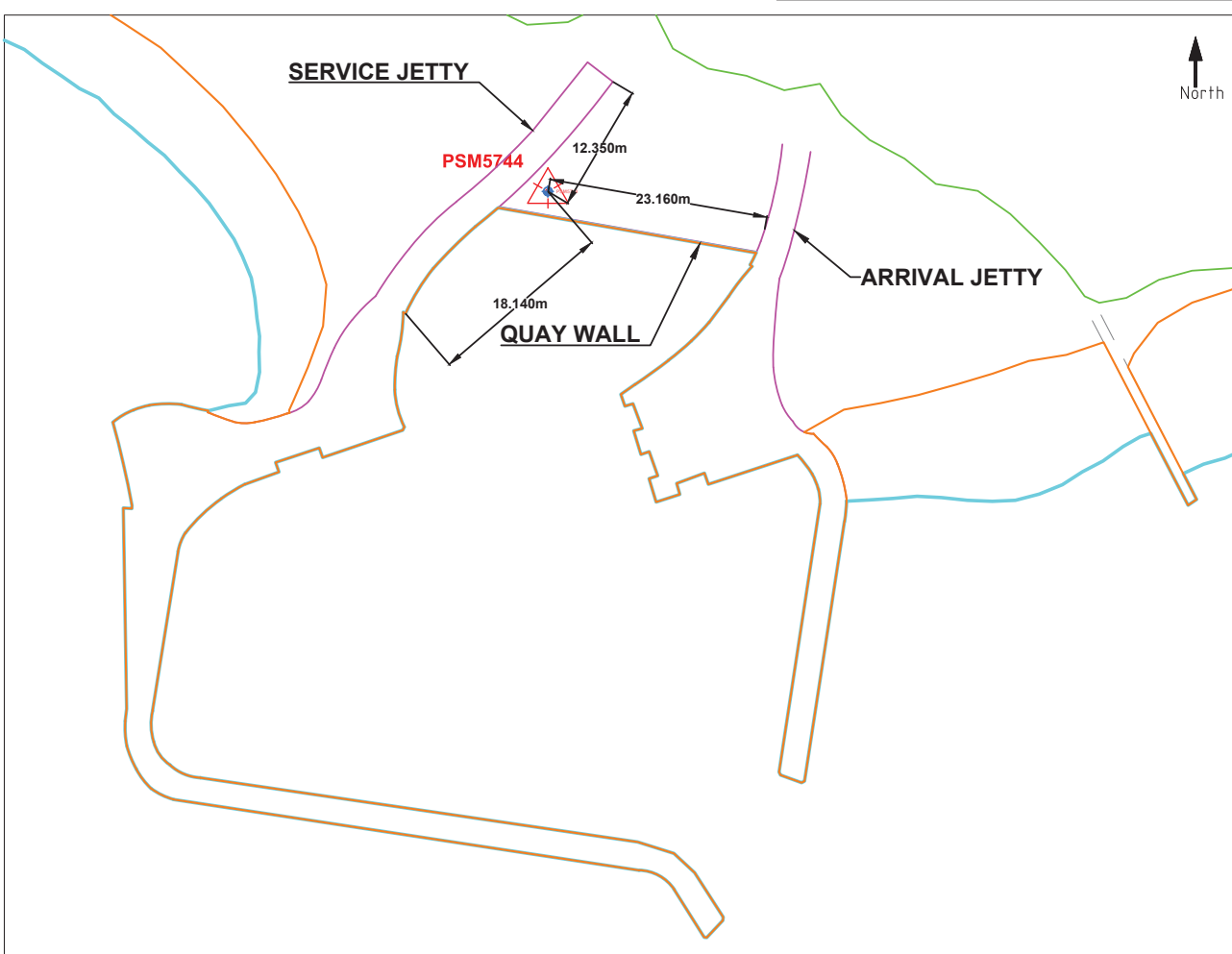
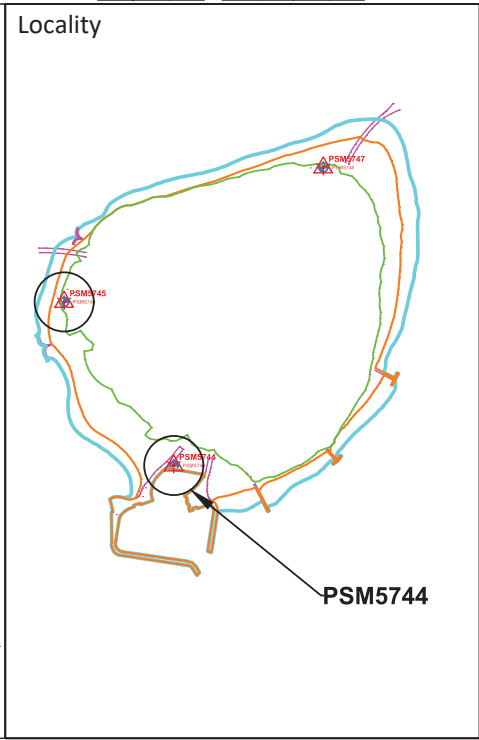
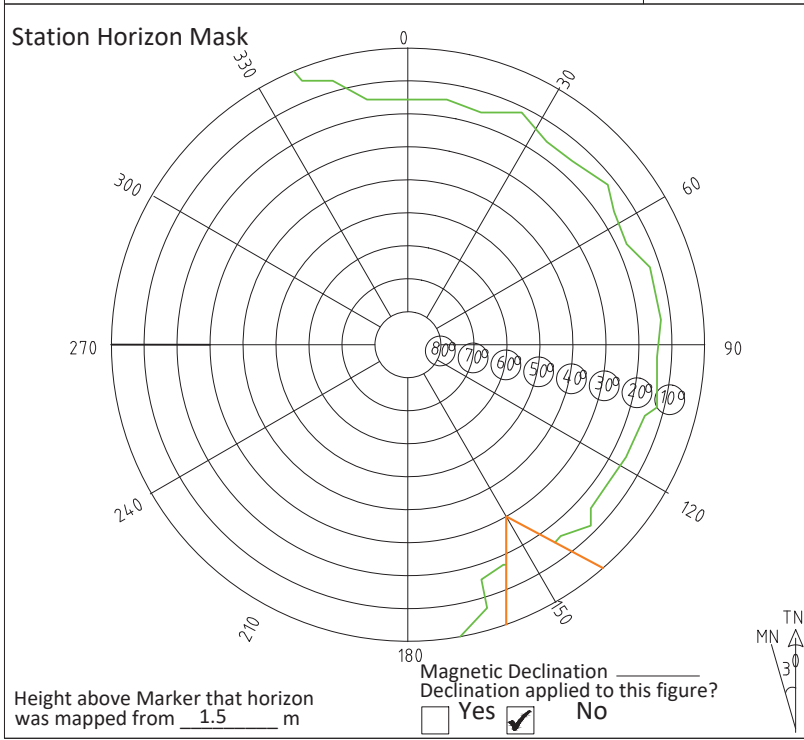
- Monument Type A as in Technical Brief
- Stainless steel plate fixed to concrete by Four bolts
- Horizontal coordinates fixed by GNSS Static survey.
- Vertical height corrected using tide prediction data
- PSM 5744 is 100mm below ground Level

General site condition & access:

- Easily accessible area with wide angle of sky visibility
- Located near the Main jetty

Owner: THILADHOO RESORTS PVT.LTD.





Sketched by: Abulho Scale: Not to Scale Date: 10 OCTOBER 2019

MALDIVES LAND SURVEY AUTHORITY

MINISTRY OF HOUSING AND INFRASTRUCTURE
 Office (PABX): +(960) 3004300, Fax: +(960) 3004254
 Ameenee Magu, Maafannu, Male', 20392, Maldives.
 Email: survey@housing.gov.mv
 Web: www.surveyofmaldives.gov.mv,



CONTROLPOINT DETAILS	Station Number	PSM 5745
Coordinate Information		
Geodetic	Grid	
WGS 84		
Lat: 5°15'44.62993"N	E:	295441.603
Long: 73°09'15.38017"E	N:	581971.673
Ellp Height: -92.664	Orth Height:	+1.190m
Island Name: B.THILADHOO	Date:	10 OCTOBER 2019

Monument description & method of survey:

- Monument Type A as in Technical Brief
- Stainless steel plate fixed to concrete by Four bolts
- Horizontal coordinates fixed by GNSS Static survey.
- Elevation reduced relative to Ellipsoid HT difference
- PSM 5745 is 100mm above ground Level

General site condition & access:

- Easily accessible area with wide angle of sky visibility
- Located in vegetation line of the island

Owner: THILADHOO RESORTS PVT.LTD.



Bottom



North Height 1.5m / Distance 3m



East Height 1.5m / Distance 3m



Up Height 1.5m



South Height 1.5m / Distance 3m



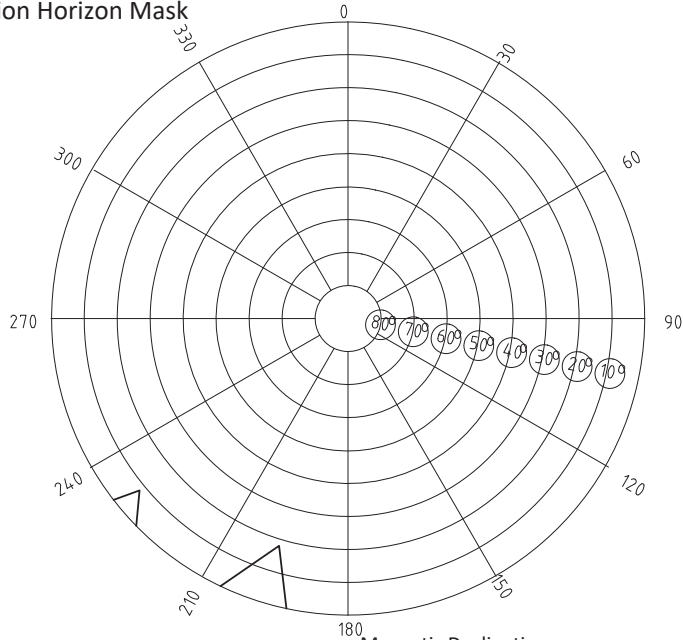
West Height 1.5m / Distance 3m

SITE INFORMATION

Station Number

P S M 5 7 4 5

Station Horizon Mask



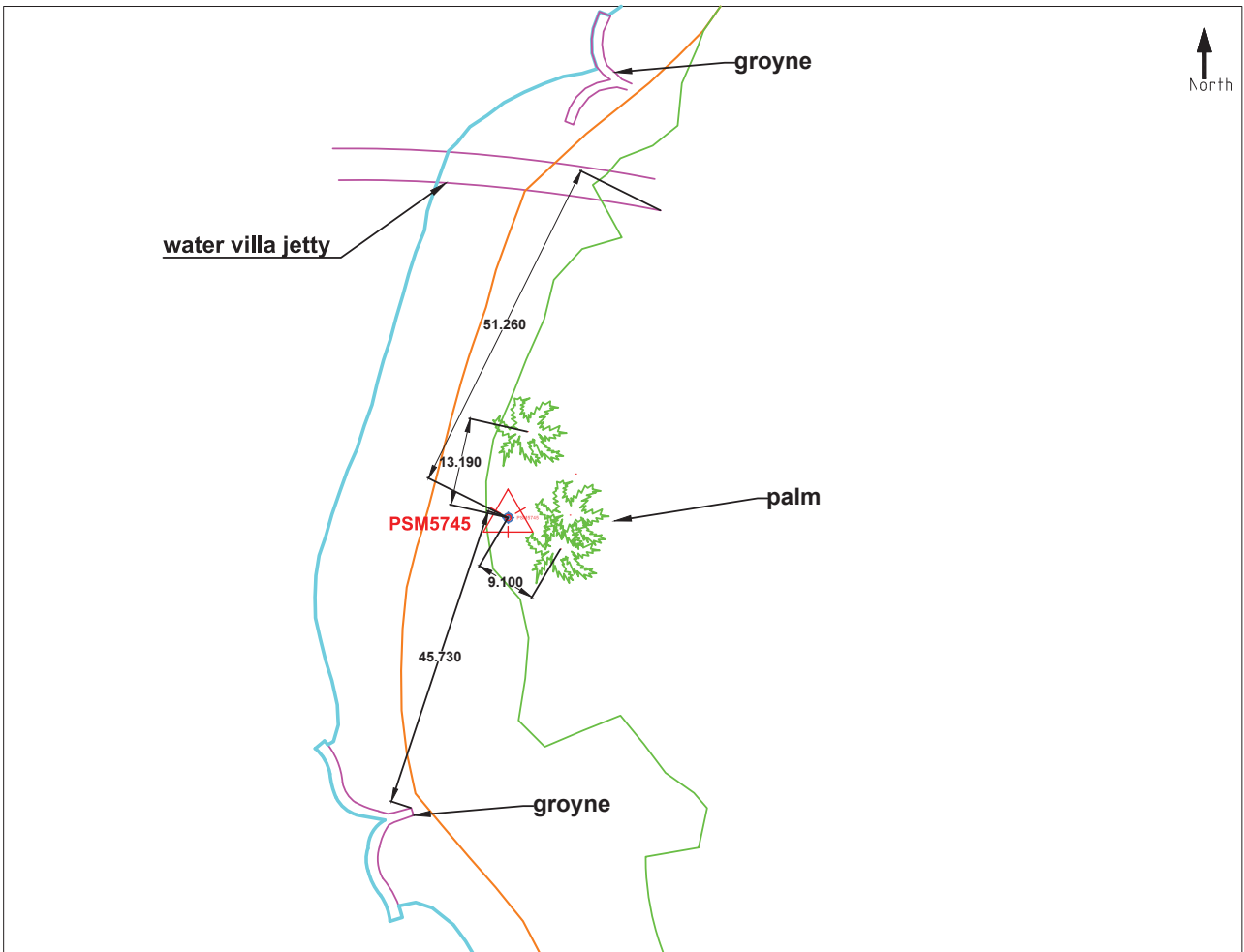
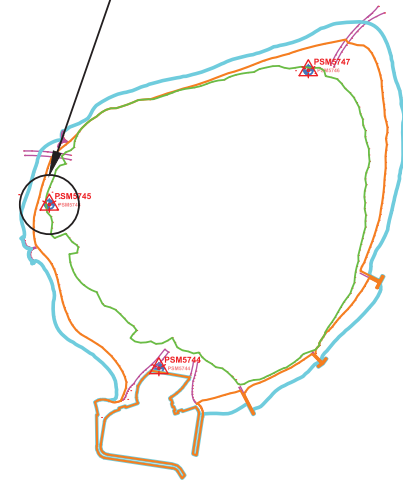
Height above Marker that horizon was mapped from 15 m

Magnetic Declination _____
 Declination applied to this figure?
 Yes No



Locality

PSM5745



Sketched by: Abulho

Scale: Not to Scale

Date: 10 OCTOBER 2019

MALDIVES LAND SURVEY AUTHORITY

MINISTRY OF HOUSING AND INFRASTRUCTURE
 Office (PABX): +(960) 3004300, Fax: +(960) 3004254
 Ameenee Magu, Maafannu, Male', 20392, Maldives.
 Email: survey@housing.gov.mv
 Web: www.surveyofmaldives.gov.mv,



CONTROLPOINT DETAILS	Station Number	PSM 5746
Coordinate Information		
Geodetic	Grid	
WGS 84	UTM Zone 43	
Lat: 5°15'47.52579"N	E:	295612.147
Long: 73°09'20.90949"E	N:	582060.134
Ellp Height: -92.501	Orth Height:	+1.353m
Island Name: B.THILADHOO	Date:	10 OCTOBER 2019

Monument description & method of survey:

- Monument Type A as in Technical Brief
- Stainless steel plate fixed to concrete by Four bolts
- Horizontal coordinates fixed by GNSS Static survey.
- Elevation reduced relative to Ellipsoid HT difference
- PSM 5746 is 50mm above ground Level

General site condition & access:

- Easily accessible area with wide angle of sky visibility
- Located in vegetation line of the island

Owner: THILADHOO RESORTS PVT.LTD.



Bottom

North Height 1.5m / Distance 2m

East Height 1.5m / Distance 2m

Up Height 1.5m

South Height 1.5m / Distance 2m

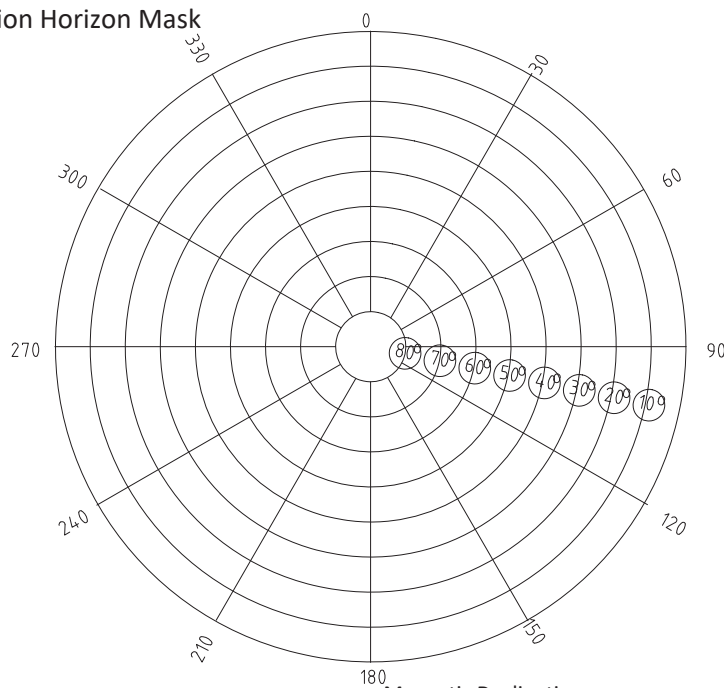
West Height 1.5m / Distance 2m

SITE INFORMATION

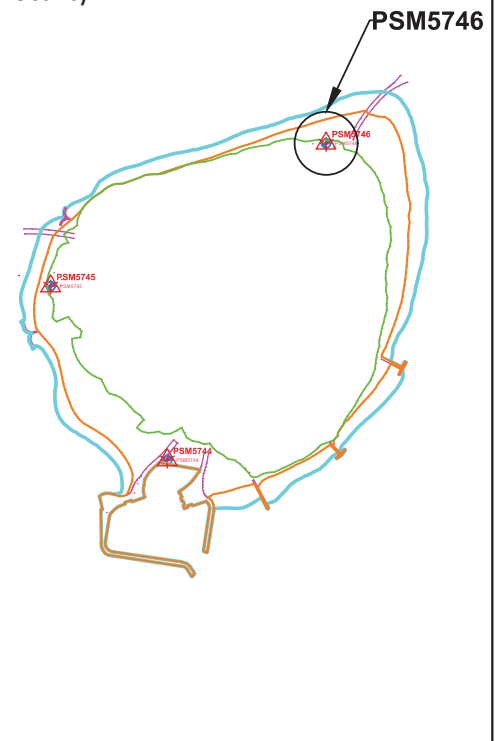
Station Number

P	S	M	5	7	4	6
---	---	---	---	---	---	---

Station Horizon Mask

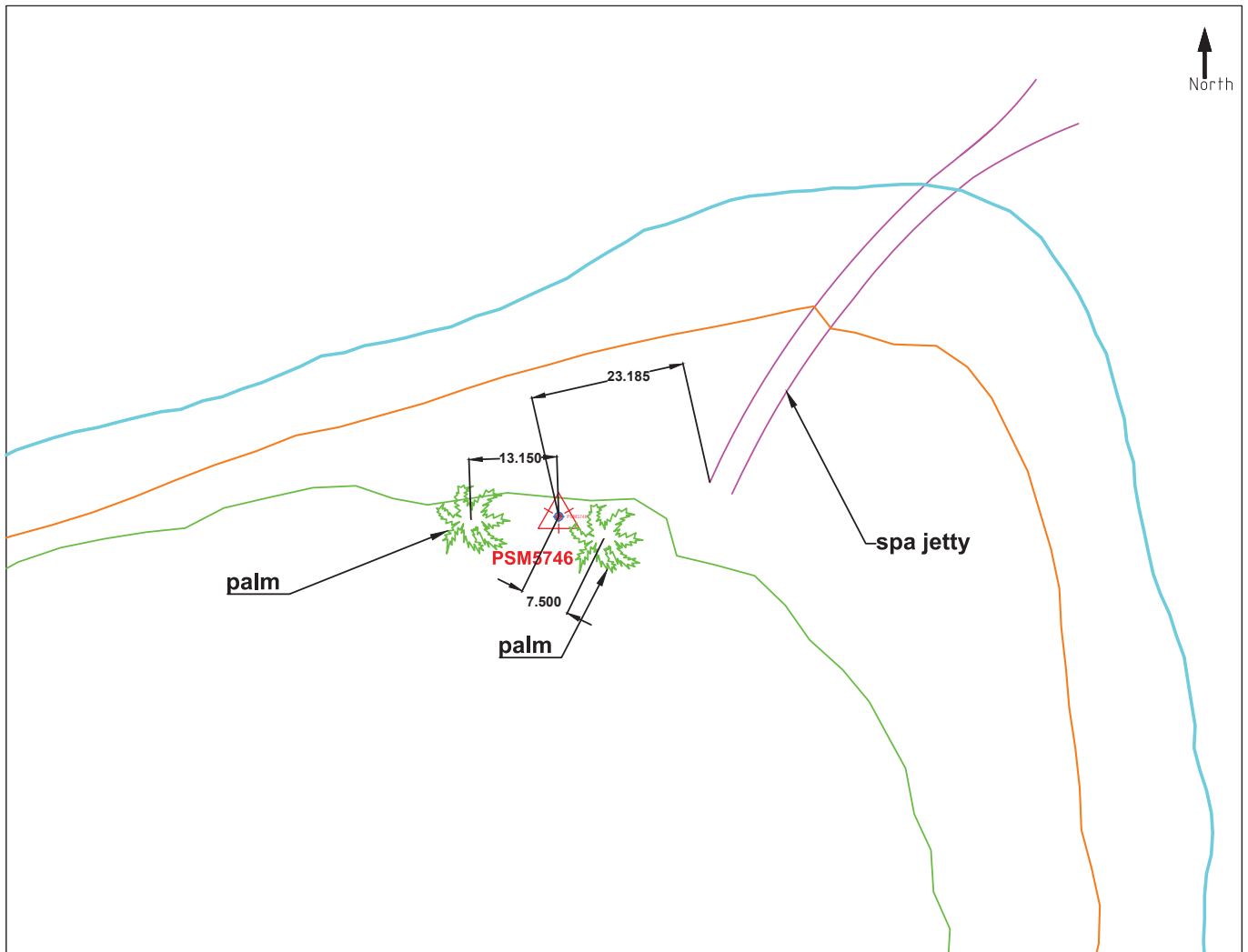


Locality



Height above Marker that horizon was mapped from 1.5 m

Magnetic Declination
Declination applied to this figure?
 Yes No



Sketched by: Abulho

Scale: Not to Scale

Date: 10 OCTOBER 2019